

# The Grama Gazette

Newsletter of the Native Plant Society of Texas  
Garland Chapter

[www.npsot.org/garland](http://www.npsot.org/garland)

Volume IX Issue VI

June 2007

---

---

## Side Oats Notes

Hello, fellow native gardeners!

This has been a great month for our gardens. Our natives are brilliant with this rain, but remember these plants understand that in the spring it rains and in the summer it gets hot and dry. We still want to plant drought tolerant plants and create more natural landscapes. Actually, it has been downright soggy, which has been wonderful for the butterflies and little insects. We have never had so many butterflies in our yard, as I have seen this year. I am having fun identifying them and chasing them around my garden.

This past month, Hester Schwarzer, from the Ft. Worth Chapter came to speak about Edible Natives. It was a real treat! She brought snacks and fun natives to eat. Then she auctioned off the wonderful edibles that she brought. She had jellies, blueberry drink, and nuts! I especially liked the pine nuts and the blueberry drink. Yum!

Thank you, Glenda, for propagating the Hot lips Salvia and Nuevo Leon. They were a success! Also, thank you, Catherine, for donating the compost bin. We had so many give-aways that no one walked home empty handed. Greg Rhode was also so gracious; he and Karen helped Hester by giving her plants to use for the demonstration and told her to take them home free of charge. Remember to thank Greg by buying plants at Rohde's Nursery. He has a great number of natives for sale.

May, Mary, Antonia, Butch and I met at the demonstration garden to weed and look at all the wonderful wildflowers blooming at Spring Creek Preserve Park. Thanks for helping! The garden looked much better after we were through. Also, Antonia reported that the church committee has met and they are planning the garden at Gloria Dei Lutheran Church in Garland.

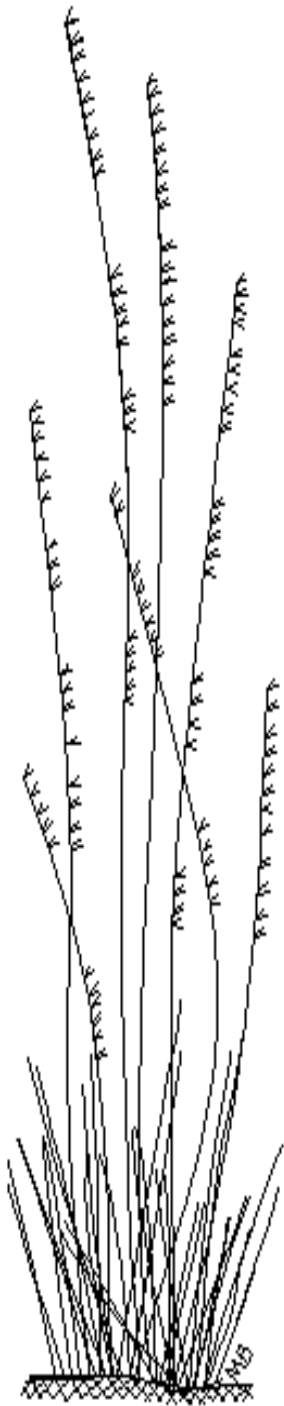
The Discovery Garden Plant Sale was great. They had interesting and fun plants for sale, as well as some hard to find natives. Thank you Shauna, May, and Butch for helping spread the news about native plants. Several of our members also volunteered at the plant sale, Antonia, Glenda, and Carol M. and we saw some other old friends, too. We will need several volunteers to do the same at the native plant walk at Discovery Gardens in July. More details coming soon.

This month Peter Schaar will come to speak about Woody Lilies. We just planted four pendula yuccas, which are woody lilies, so I am interested in what he has to say. I know there are many varieties in Texas and they can be beautiful, architectural, accents for our landscapes. Peter Schaar is so knowledgeable that I always learn from his expertise.

Our meetings are open to all, so bring your friends! Help us spread the word on the benefits of planting natives.

Happy Gardening & Grow Native!

Donna G. Simon  
Chapter President.



### Sideoats Grama

(*Bouteloua curtipendula*)

Enjoys full sun;  
grows two to three feet tall  
with attractive seed heads on  
one side of the stem;  
attracts birds and butterflies;  
Is the state grass of Texas

## Blackfoot Daisy (*Melampodium leucanthum*)

### Description:

Low-growing perennial wildflower. The gray-green, softly hairy foliage forms a neat mound. Height 6 to 12 inches, width 12-15 inches. Bloom is 1 inch across, a white honey-scented flower with yellow center. Bloom period is March to November. Evergreen most winters, can go dormant in cold winter.

Found on limestone and calcareous soils from West Texas to the Hill Country in Texas. Also in Kansas, Colorado, Arizona and Mexico.

### Planting Sites:

Plant in full sun to part sun in well-drained sites. Do not plant under sprinkler irrigation where it will be watered with lawn. Acceptable soil types include sand, caliche, limestone, and rocky gravelly soils. Works well in a rock garden or in poor soils. Will grow in richer soils but don't overwater.

### Planting Instructions:

Plant 1 foot apart, can be massed like annuals or planted individually. Dig hole slightly larger than, but the same depth as the nursery container. Carefully remove plant from container and gently loosen any compacted soil around the root ball. Plant at the same depth as the soil in the container. Will grow larger if soil is complemented with compost. Does not like or need much fertilizer. After watering, add 2 inches of mulch around plant.

### Watering Instructions:

If planting in spring: Water in well after planting, using root stimulator according to directions. Water deeply every 7-10 days, checking an inch or two into soil at edge of root ball to determine soil moisture. Skip a watering after a rainfall of ½ to 1 inch.

**First fall/winter:** Maintain this watering schedule until the first fall after planting. Reduce water during fall and winter. In a "normal" year, no watering may be necessary in fall and winter, but during a dry period, monthly watering may be desirable. **Second spring and thereafter:** Water monthly only in periods of drought. Once established, Blackfoot daisy will survive with little supplemental irrigation.

### Other care:

Remove dead blooms to encourage more flowers. Cut back by one-half before spring growth to encourage fullness.



### NICE! Tip:

Use instead of hybrid coreopsis, annuals such as zinnias and petunias, many other exotic perennials.

\*Article courtesy of NPSOT Boerne Chapter NICE!



*Please join us for our March meeting of the  
NPSOT, Garland Chapter,  
Featuring:*

*Woody Lilies (Yuccas and more)  
with Peter Schaar*

June 24, 2007  
Meeting/Question & Answer Time at 2 pm  
Program begins at 2:30 pm  
Rohde's Nature Store and Nursery  
1651 Wall Street  
Garland  
972-864-1934

*Please bring a friend!*



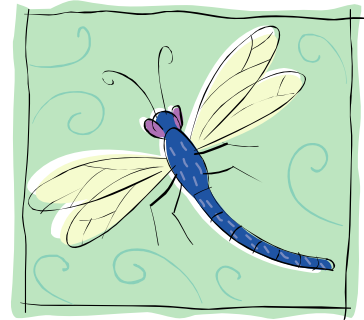
## Community Events

---

Texas Discovery Gardens: 3601 Martin Luther King Jr. Blvd. in Fair Park. 214-428-7476 or visit the website at [www.texasdiscoverygardens.org](http://www.texasdiscoverygardens.org)

**Winged Jewels: Dragonfly Workshop** 9 a.m. – 3:30 p.m. Saturday, June 30, Bring a lunch! members \$10; non-members \$15. Advance registration is required. **Registration deadline is Friday, June 29**

With whimsical names such as Roseate Skimmer, Illinois River Cruiser and Calico Pennant, you might think of Dragonflies and Damselflies as colorful, benign flying insects that just happen to hang around ponds and streams but did you know that they are actually voracious predators both as adults and juveniles? In fact as larvae they live their lives underwater feeding on mosquito larvae, plankton and even small tadpoles! Over 200 different kinds of Dragonflies and Damselflies live in Texas and at least 75 of these can be found in the Dallas area. Learn about the amazing life cycle and daredevil antics of this highly beneficial insect. Conducted by U.S. Fish and Wildlife biologist Omar Bocanegra, the workshop will include a walking tour of Texas Discovery Gardens and Fair Park to identify dragonflies and damselflies in flight.



**Garden Walk: The Fascinating World of Butterflies** 10 a.m. – 3 p.m. Saturday, July 8 Advanced registration required. **Last day to register is Friday, July 7** \$35.00 for non members, Members get \$5.00 off

"An in depth look into the fascinating lives of butterflies from around the world with an emphasis on the local species found in north Texas. A detailed look into each of the four stages of a butterfly's life, the egg, the caterpillar, the pupa and the adult, will show the amazing metamorphosis these creatures undergo as they struggle to survive in an ever changing -- and vanishing -- landscape that is full of predators, disease and obstacles. Various species will be followed through their life cycle to illustrate the different manners in which they have each adapted to survive throughout the season which will highlight plant adaptations, emigration, migration and diapause. Habitat destruction, conservation issues and how butterfly farms and exhibits around the world help bring butterflies and the dangers they face into the public consciousness.

After the lecture portion of the class, participants will caravan to tour "Butterflies Unlimited", a working butterfly farm in the Dallas area." This workshop is suitable for both adults and families with children 10 and up. Bring a lunch!

For links to these and other organizations go to [www.npsot.org/Garland/links.htm](http://www.npsot.org/Garland/links.htm)



The Xerces Society-An international nonprofit organization dedicated to the protecting biological diversity through invertebrate conservation.

Click on this link to their page concerning the importance of pollinators including honeybees [http://www.xerces.org/Pollinator\\_Insect\\_Conservation/Poll\\_Why\\_Care.htm](http://www.xerces.org/Pollinator_Insect_Conservation/Poll_Why_Care.htm)

## Join the Native Plant Society of Texas

Membership is renewable annually and extends for a year from the date we receive your original payment. If you wish to join or renew your membership, mail this form and the appropriate remittance, to:

**Native Plant Society of Texas  
P.O. Box 3017  
Fredericksburg, TX 78624  
830/997-9272**

- ( ) Student.....\$15.00 ( ) Senior citizen (65+)... \$20.00  
 ( ) Senior Couple (one member 65+) .....\$30.00  
 ( ) Individual ..... \$25.00 ( ) Family.....\$40.00  
 ( ) Group..... \$50. 00 ( ) Patron..... \$100.00  
 ( ) Benefactor.....\$250.00 ( ) Supporting.....\$500.00  
 ( ) Corporate.....\$1000.00 ( ) Lifetime..... \$1000.00

Name \_\_\_\_\_

Address \_\_\_\_\_

City \_\_\_\_\_ State \_\_\_\_\_ Zip \_\_\_\_\_

County \_\_\_\_\_ Phone \_\_\_\_\_

Chapter Affiliation GARLAND

New ( ) Renewal ( ) Address Change ( )

E-mail Address \_\_\_\_\_

\* You may also submit your application to the Chapter Treasurer at any meeting.



## Rohde's

*Nursery  
& Nature Store*

*Thanks to our host Greg and the staff at Rohde's. Your support is greatly appreciated!*

Rohde's  
1651 Wall Street  
Garland, TX 75041  
(972) 864-1934

<http://www.beorganic.com/index.htm>



## Chapter Leadership Team

Donna Simon , *President*  
[donnagsimon@hotmail.com](mailto:donnagsimon@hotmail.com)

Shauna Feely, *President Elect  
and Historian*  
[shauna575@aol.com](mailto:shauna575@aol.com)

Carol Shoemaker, *Treasurer*  
[cmshoe@sbcglobal.net](mailto:cmshoe@sbcglobal.net)

Glenda McCune, *Secretary*  
[dancn4nana@prodigy.net](mailto:dancn4nana@prodigy.net)

Barbara Merry, *Webmaster*  
[blmerry@yahoo.com](mailto:blmerry@yahoo.com)

Mary Cariker, *Newsletter Editor*  
[marycariker@yahoo.com](mailto:marycariker@yahoo.com)

Butch Simon, *Publicity*  
[butchsimon@hotmail.com](mailto:butchsimon@hotmail.com)

